



SCB-HS Series Slew Rings



# SCB-HS Series



### Introduction

SCB-HS bearings resemble the SCB-RK series in size. The SCB-HS ring configuration is a rectangular cross section. OD size range = 20"-47"  
Provides greater stiffness and load capacity over the SCB-RK

### Construction

- Deep groove gothic arch
- 4 point contact
- Sealed
- Ring Configuration:
  - \* Non geared
  - \* External gear
  - \* Internal gear
  - \* Geared rings have tapped holes
  - \* Non geared rings have thru holes

### -Gear detail:

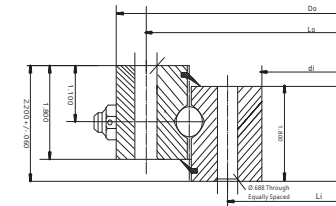
- \* Involute Stub
- \* 20 deg Pressure Angle
- \* AGMA class 8
- \* .005"-.025" allowable backlash
- \* Grease fittings for lubrication

### Applications:

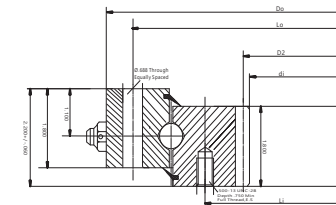
- Rotary table
- Positioner
- Material handling
- Conveyor
- Rotators
- Stretch wrap equipment
- Crane

Customer First Service Foremost

## No Gear



SOCARE™ P/N	KAYDON P/N	OUTLINE DIMENSIONS AND WEIGHT				Gear Data INV.STUB,α=20°				Moment Rating Crm (ft-lbs)	
		Do (in)	di (in)	G Approx. (lbs)	OUTER RING Lo (in) no	INNER RING Li (in) ni	D2 (in)	Pd (in)	Z2 Fz (lbs)		
SCB-HS518	HS6-16P1Z	20.400	12.000	103	19.000	8	13.500	12			50,500
SCB-HS648	HS6-22P1Z	25.500	17.000	137	24.000	12	18.500	15			72,700
SCB-HS749	HS6-25P1Z	29.500	21.000	162	28.000	15	22.500	18			91,800
SCB-HS848	HS6-29P1Z	33.400	25.000	186	32.000	15	26.500	18			111,900
SCB-HS950	HS6-33P1Z	37.400	28.830	216	35.750	18	30.500	20			128,000
SCB-HS1048	HS6-37P1Z	41.250	32.830	233	39.750	18	34.380	20			130,900
SCB-HS1198	HS6-43P1Z	47.180	38.750	269	45.620	20	40.250	24			139,900



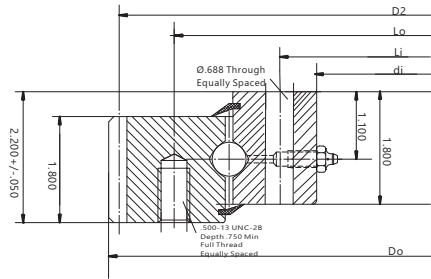
## Internal Gear

SOCARE™ P/N	KAYDON P/N	OUTLINE DIMENSIONS AND WEIGHT				Gear Data INV.STUB,α=20°				Moment Rating Crm (ft-lbs)			
		Do (in)	di (in)	G Approx. (lbs)	OUTER RING Lo (in) no	INNER RING Li (in) ni	D2 (in)	Pd (in)	Z2 Fz (lbs)				
SCB-HSN518	HS6-16N1Z	20.400	12.850	92	19.000	8	14.880	16	13.250	4	53	6,084	50,500
SCB-HSN648	HS6-22N1Z	25.500	17.600	117	24.000	12	19.630	20	18.000	4	72	5,842	72,700
SCB-HSN749	HS6-25N1Z	29.500	21.600	148	28.000	15	23.630	24	22.000	4	88	5,719	91,800
SCB-HSN848	HS6-29N1Z	33.400	25.600	171	32.000	15	27.630	28	26.000	4	104	5,634	111,900
SCB-HSN950	HS6-33N1Z	37.400	29.130	205	35.750	18	31.500	30	29.667	3	89	7,617	128,000
SCB-HSN1048	HS6-37N1Z	41.250	33.130	226	39.750	18	35.500	32	33.667	3	101	7,531	130,900
SCB-HSN1198	HS6-43N1Z	47.180	39.130	253	45.620	20	41.500	36	39.667	3	109	7,343	139,900

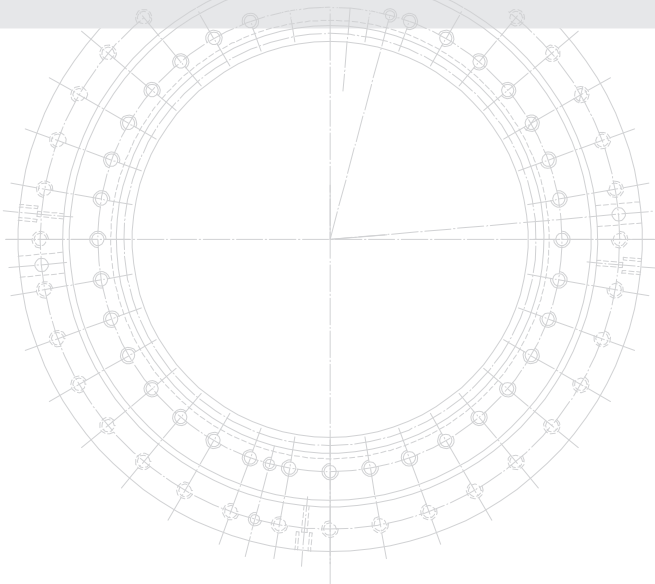
Customer First Service Foremost



### External Gear



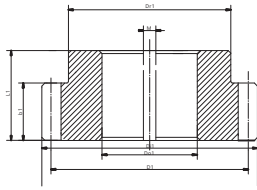
SOCARE™ P/N	KAYDON P/N	OUTLINE DIMENSIONS AND WEIGHT			Gear Data				Moment Rating Crm (ft-lbs)
		Do (in)	di (in)	G Approx. (lbs)	OUTER RING Lo (in) no	INNER RING Li (in) ni	INV.STUB, α=20° D2 (in) Pd (in) Z2 Fz (lbs)		
SCB-HSE505	HS6-16E1Z	19.900	12.000	85	18.000 14	13.500 12	19.500 4 78 4,981	50,500	
SCB-HSE638	HS6-22E1Z	25.150	17.000	108	23.250 18	18.500 15	24.750 4 99 5,076	72,700	
SCB-HSE740	HS6-25E1Z	29.150	21.000	137	27.250 20	22.500 18	28.750 4 115 5,127	91,800	
SCB-HSE835	HS6-29E1Z	32.900	25.000	158	31.000 24	26.500 18	32.500 4 130 5,164	111,900	
SCB-HSE945	HS6-33E1Z	37.200	28.830	188	35.000 28	30.500 20	36.667 3 110 6,817	128,000	
SCB-HSE1046	HS6-37E1Z	41.200	32.830	207	38.880 28	34.380 20	40.667 3 122 6,860	130,900	
SCB-HSE1190	HS6-43E1Z	46.870	38.750	237	44.630 32	40.250 24	46.333 3 139 6,910	139,900	



Customer First Service Foremost

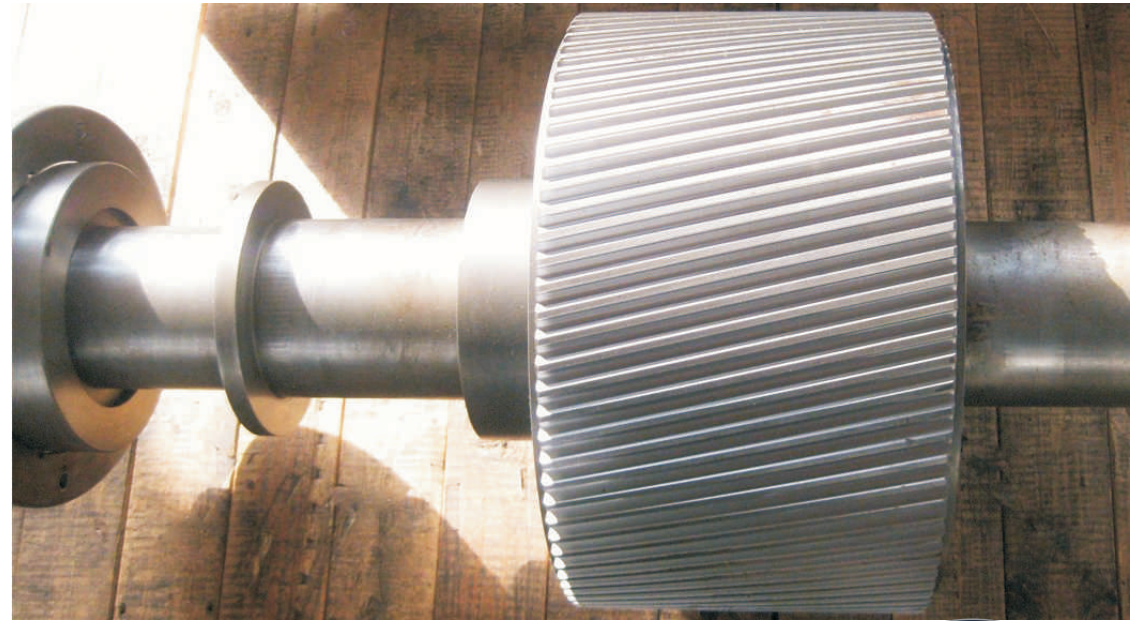






### Mating Pinions for SCB-RK Series Bearings

SOCARE™ BEARING P/N	KAYDON P/N	Gear Data (α = 20°)				OUTLINE DIMENSIONS AND WEIGHT						G Approx. (lbs)
		Z <sub>1</sub>	P <sub>d</sub> (in)	b <sub>1</sub> (in)	Tooth Form	L <sub>1</sub> (in)	D <sub>1</sub> (in)	D <sub>o1</sub> (in)	D <sub>r1</sub> (in)	D <sub>i1</sub> (in)	w (in)	
RK6-16	39200001	14	4	2.000	SD	2.880	3.500	3.900	2.880	1.000	1/4	6.40
RK6-29	39200002	17	4	2.000	SD	2.880	4.250	4.650	3.630	1.000		10.00
RK6-33	39200003	14	3	2.000	SD	2.880	4.667	5.200	3.880	1.250	5/16	11.40
RK6-43	39200004	17	3	2.000	SD	2.880	5.667	6.200	4.880	1.250		18.30
Tolerances			Ref.	+/- .015		+/- .015	Ref.	+ .000 - .010	Ref.	+ .002 - .000		



### Mating Pinions for SCB-HS Series Bearings

SOCARE™ BEARING P/N	KAYDON P/N	Gear Data (α = 20°)				OUTLINE DIMENSIONS AND WEIGHT						G Approx. (lbs)
		Z <sub>1</sub>	P <sub>d</sub> (in)	b <sub>1</sub> (in)	Tooth Form	L <sub>1</sub> (in)	D <sub>1</sub> (in)	D <sub>o1</sub> (in)	D <sub>r1</sub> (in)	D <sub>i1</sub> (in)	w (in)	
HS6-16	39200001	14	4	2.000	SD	2.880	3.500	3.900	2.880	1.000	1/4	6.40
HS6-29	39200002	17	4	2.000	SD	2.880	4.250	4.650	3.630	1.000		10.00
HS6-33	39200003	14	3	2.000	SD	2.880	4.667	5.200	3.880	1.250	5/16	11.40
HS6-43	39200004	17	3	2.000	SD	2.880	5.667	6.200	4.880	1.250		18.30
Tolerances			Ref.	+/- .015		+/- .015	Ref.	+ .000 - .010	Ref.	+ .002 - .000		

### Mating Pinions for SCB-MT Series Bearings

SOCARE™ BEARING P/N	KAYDON P/N	Gear Data (α = 20°)				OUTLINE DIMENSIONS AND WEIGHT						G Approx. (lbs)
		Z <sub>1</sub>	P <sub>d</sub> (in)	b <sub>1</sub> (in)	Tooth Form	L <sub>1</sub> (in)	D <sub>1</sub> (in)	D <sub>o1</sub> (in)	D <sub>r1</sub> (in)	D <sub>i1</sub> (in)	w (in)	
MTE-145/324	39201001	17	5/7	2.250	FS	3.125	3.400	3.686	2.906	1.000	1/4	6.60
MTE-415	39200001	14	4	2.000	SD	2.880	3.500	3.900	2.880	1.000	1/4	6.40
MTE-540	39200002	17	4	2.000	SD	2.880	4.250	4.650	3.630	1.000		10.00
MTE-415	39200003	14	3	2.000	SD	2.880	4.667	5.200	3.880	1.250	5/16	11.40
MTE-540	39200004	17	3	2.000	SD	2.880	5.667	6.200	4.880	1.250		18.30
Tolerances			Ref.	+/- .015		+/- .015	Ref.	- .010	Ref.	0.002		



Customer First Service Foremost

Customer First Service Foremost